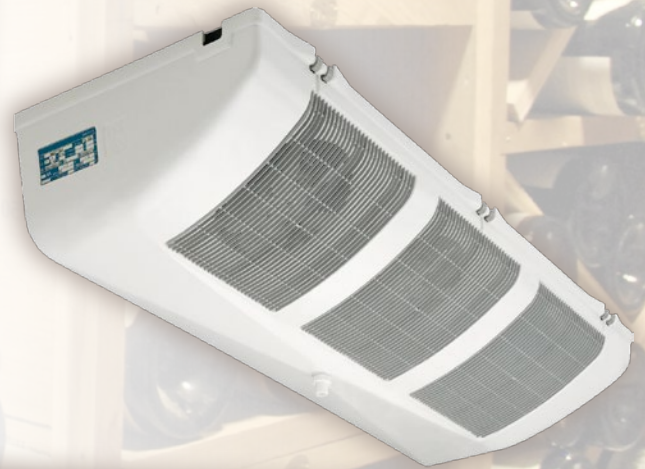


Split system for wine cellar

CLIMACAVE range

- Ready-to-install refrigeration Split Systems suitable for wine cellar air conditioning: conservation at +12°C.
- Low-depth, ceiling-mounted unit cooler designed to control cellar hygrometry.



0.9  3 kW

CLIMACAVE - Split system for wine cellars

Market segments



FFS Cafés - Hotels - Restaurants - Corner shops

CLIMACAVE

$t_j = +12^\circ\text{C} - \text{DT1} = 12\text{K}$

Split system	+32°C	MIV ...	3 A	5 A	10 A	13 A
Capacity R404A (1)		kW	1,30	1,50	2,37	3,56
Input power (1)		kW	0,79	0,92	1,43	1,81

Condensing unit

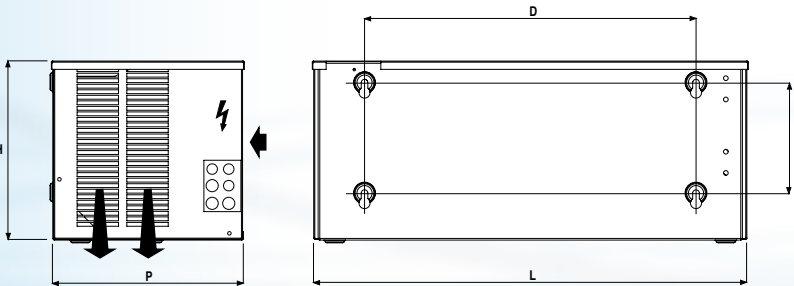
Compressor	CV	3/8	1/2	1	2.3	
Voltage	50Hz	230V/1+T	230V/1+T	230V/1+T	230V/1+T	
Air flow	m ³ /h	700	700	850	2500	
Input power	W max.	550	770	1290	1590	
Input current	A max.	5,0	5,6	6,8	9,0	
Dimensions	L	mm	790	790	790	790
	P	mm	352	352	352	460
	H	mm	370	370	370	570
	D	mm	600	600	600	750
	F	mm	200	200	200	350
Suction	Ø	3/8"	3/8"	1/2"	1/2"	
Liquid	Ø	1/4"	1/4"	1/4"	1/4"	
Net weight	kg	43	45	55	60	

Unit cooler

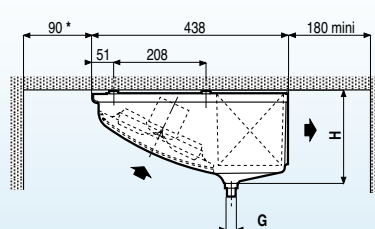
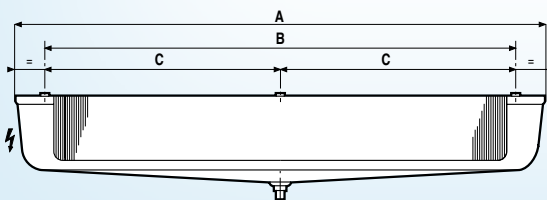
Nb x Ø	mm	2 x 200	2 x 200	3 x 200	4 x 200	
Air flow	m ³ /h	580	580	870	1160	
Input power	W max.	76	76	114	152	
Input current	A max.	0.48	0.48	0.72	0.96	
Dimensions	A	mm	784	784	1174	1504
	B	mm	596	596	-	-
	C	mm	-	-	493	658
	H	mm	227	227	227	209
	G	Ø	Ø 32	Ø 32	Ø 32	1" G
Net weight		9.5	9.5	15.0	20.0	

(1) 10K superheating - 3K subcooling

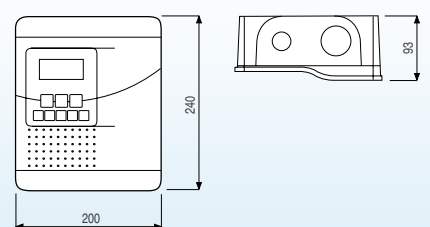
Condensing unit dimensions



Unit cooler dimensions



Control unit dimensions



Description

Condensing unit

Casing

- Frame and casing made of pre-painted, sheet metal for outdoor floor or wall-mounted installation.

Condenser

- Copper/aluminium condenser coil with fan 230V/1 or 400V/3 - 1,500 rpm.

Switching cabinet

- Sealed IP 53 switching cabinet comprising:
 - 1 switchboard to standard CEI 439-1 and APAVE approved, passage of electrical connections via packing glands, enclosure pre-wired with unit and unit cooler protection devices.

Other equipment

- Liquid line with dryer with accumulator and hygroscopic indicator.
- Operating valve with pressure tapping point (inlet/outlet on unit).
- Pre-filled with R404A.

Unit cooler

- Thick, recyclable ABS casing.
- Copper/aluminium coil, fins spaced at 4.23 mm and grooved tubes.
- Pre-fitted wide range expansion valve.
- Pre-filled with nitrogen.
- Wine cellar application with conservation at +12°C and controlled hygrometry.

Control

- Electronic control.
- Lighting control.
- Display and signalling of alarms.
- An additional programmable contact (door opening, trapped person safety...).

Options

Miscellaneous

- KHE Magnetic port-hole lighting kit with door switch (not fitted).

Certifications



Advantages

Installation / Servicing / Maintenance

Ready-to-install units (operating valve, dryer, indicators, casing...) with user-friendly design offering easy access to components.

Compact and sturdy equipment for easy handling and installation in confined spaces.

Switching enclosure factory pre-wired and tested.

Unit cooler made of ASB with hinge-mounted casing, access to all internal components (coil, fan...) rendering setting and cleaning work easier.